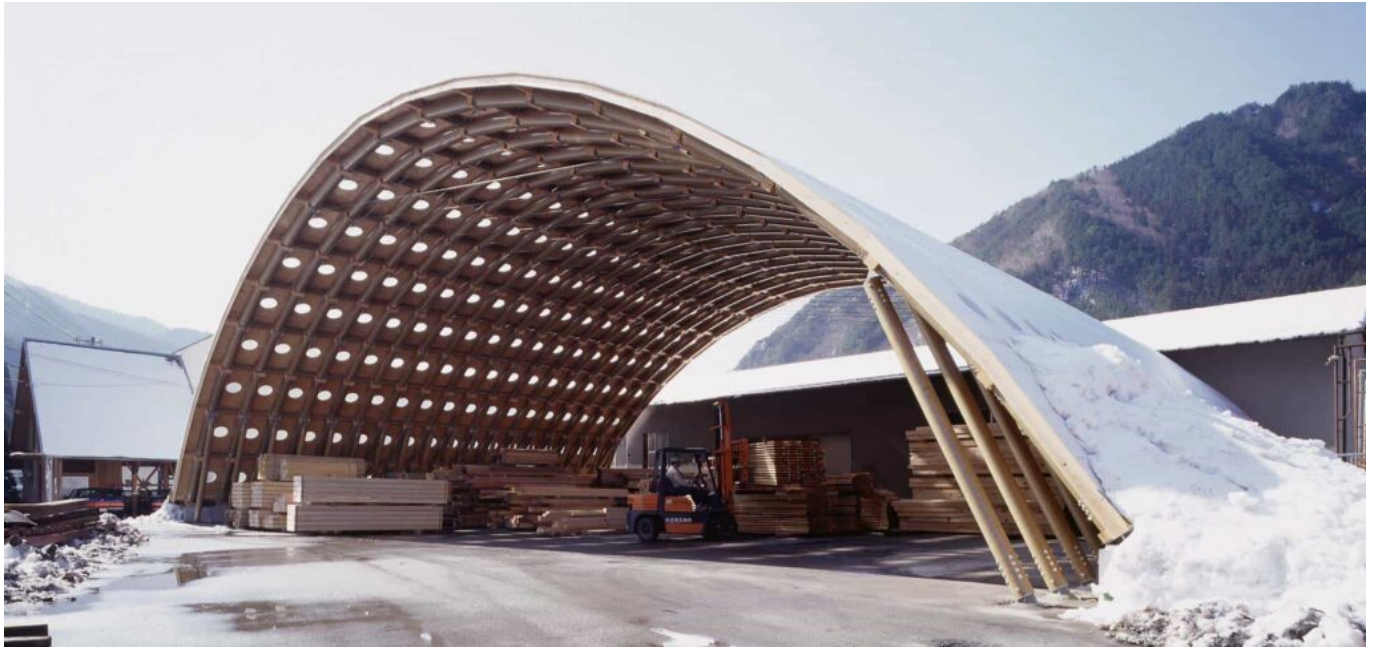


Paper Dome



Year: 1998

Location: Japan

Program: Industrial

Status: Completed

Type: New-built

Structure: Paper Tube Structure

This permanent paper shelter was designed for a contractor of wooden houses. Because paper tubes cannot be bent, a segmented arch was created with wooden joints. Lateral stability was accomplished through the use of structural plywood boards instead of metal bracing, each punched with the maximum allowable aperture to let in light. Finally, a layer of corrugated polycarbonate was used as exterior cladding.