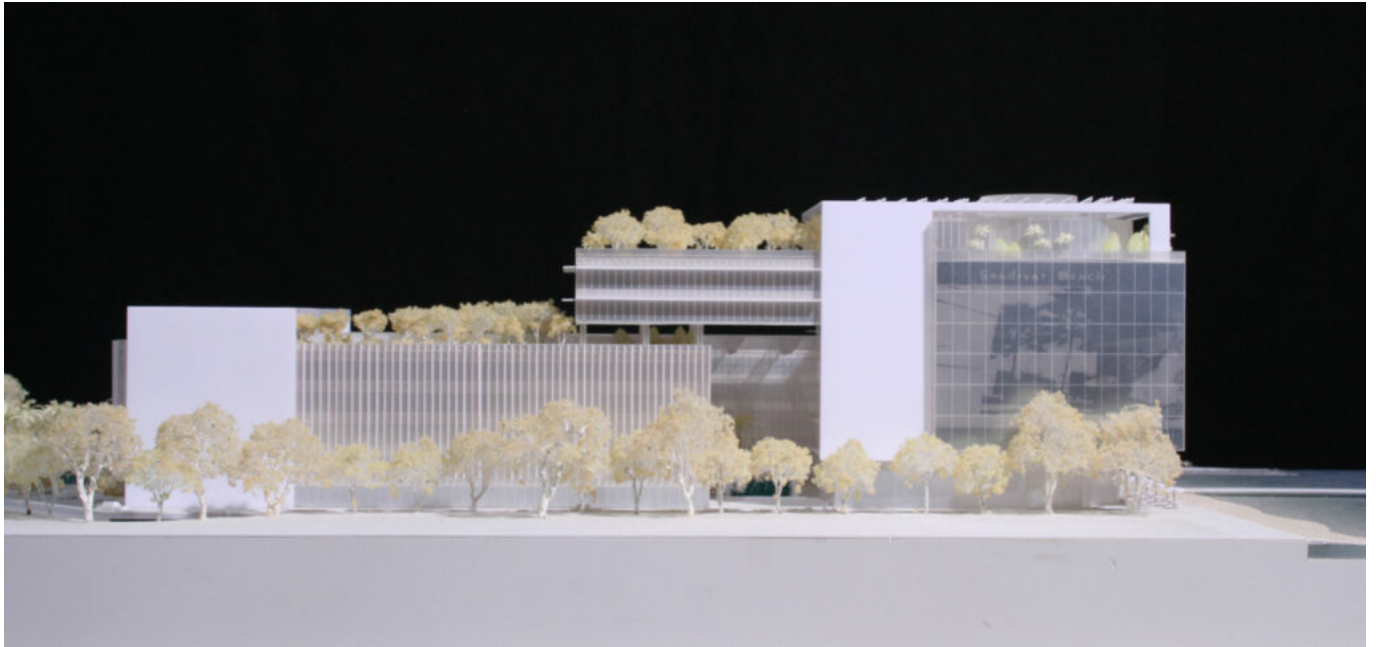


# TDIC Headquarters



Year: 2010

Location: United Arab Emirate

Program: Office and Headquarters

Status: Unbuilt

Type: New-built

Structure:

The main concept of the interior design is to use local materials as much as possible. The perforated waved roof made of “Ductal” concrete (contains local sand) is the structure of the roof and at the same time acts as a shading device casting shadow of the Ghaf tree on the atrium space. A glass roof sits on the “Ductal” roof. Operable outswing windows are located in the longitudinal edge in order to exhaust the hot air when necessary.