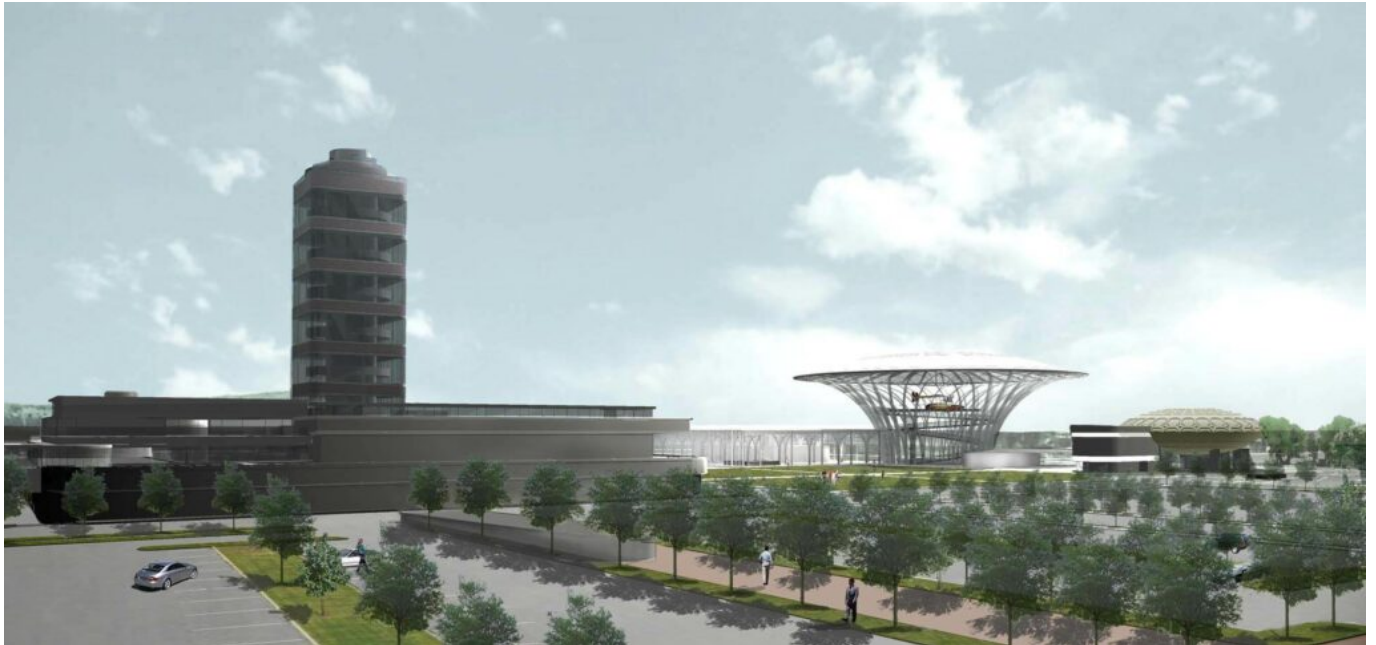


SC Johnson_Son Extension



Year: 2006

Location: United States

Program: Museum / Gallery

Status: Competition

Type: Extension / Renovation

Structure:

Proposed for the SC Johnson company, this complex contains facilities for both visitors and employees. With a structure like a woven basket, the circular pavilion exhibits a historical airplane. Structurally contrasting Frank Lloyd Wright's Johnson Wax building, the square pavilion is punctured by woven steel columns through which natural light penetrates the interior space. A glass shutter façade covers the perimeter to connect the cafeteria to the terrace and landscape.