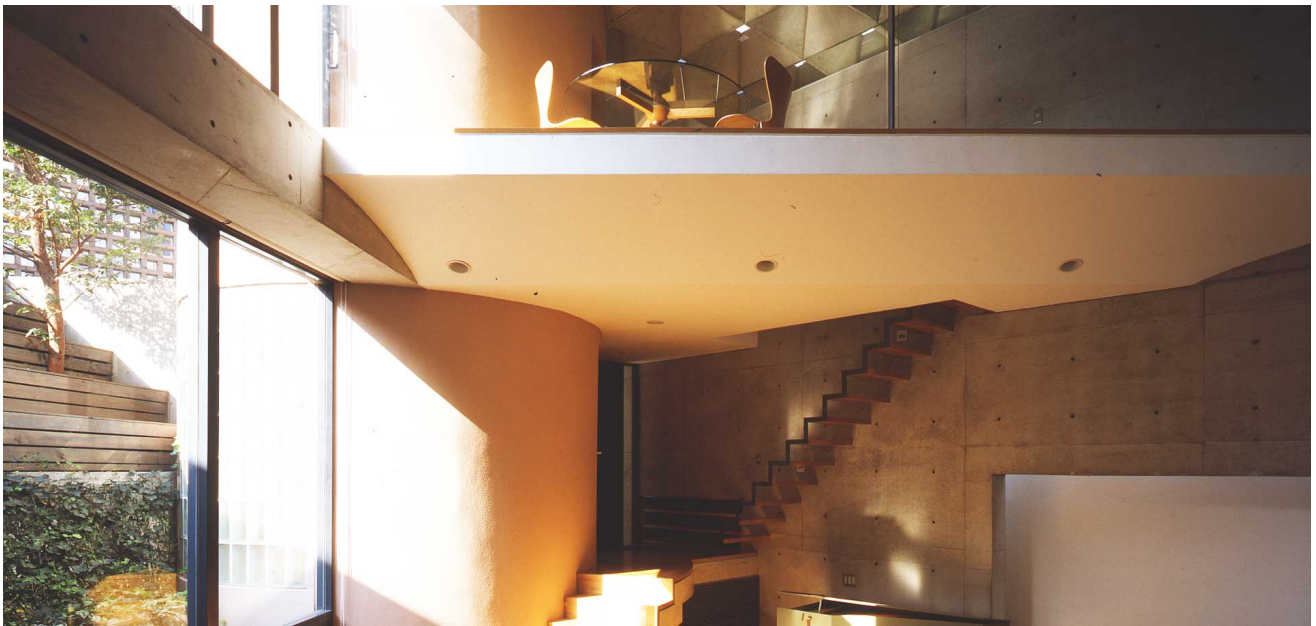


Year: 1991  
Location: Japan  
Program: Residential

# Studio for vocalists



Built in a dense residential area of Tokyo, noise and privacy were considered central design issues for the Studio for Vocalists. The square volume is cut diagonally to separate the interior from an exterior courtyard. A cylindrical and a rectangular core are placed on the diagonal of the building, housing private rooms and wet spaces. A pyramidal waffle slab with skylights roofs a double-story height living room that also functions as a performance space.