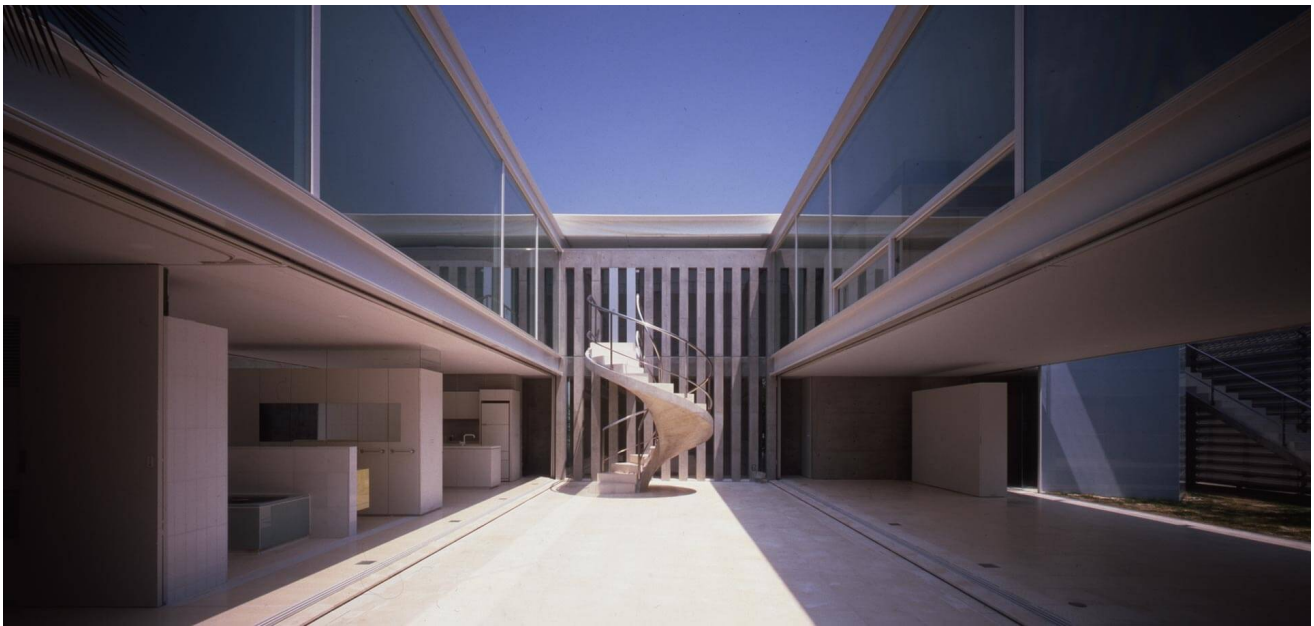


Year: 1995

Location: Japan

Program: House

## 2/5 House



The rectangular site of the house is divided into five equal  $15\text{m} \times 5\text{m}$  rectangles. On two locations, a second floor is added to create a rhythm of interior spaces that alternate from front yard, interior space, central courtyard, interior space, and back yard. Instead of creating a neutral interior environment under one roof, only the floor is shared as a universal floor and the different functions of the various spaces can be seen together. Depending on changes in time and seasons, glass sliding doors and motorized tent roofs over the courtyard are used to control the openness of the architectural environment.