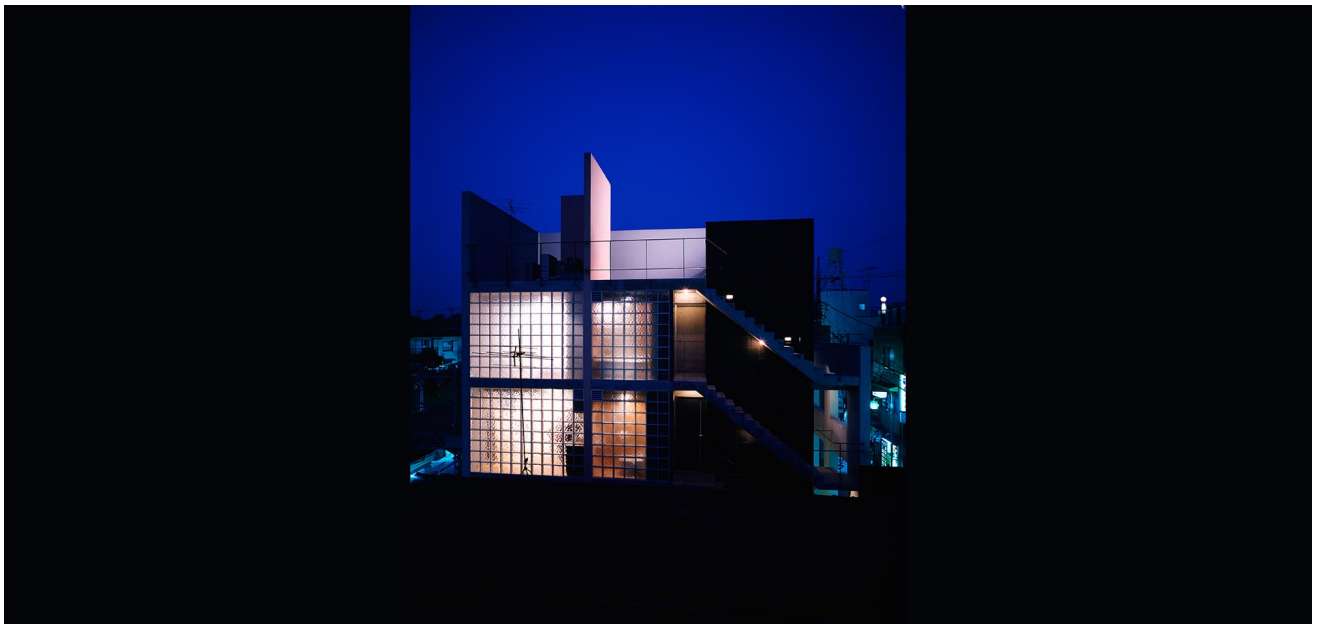


Year: 1988

Location: Japan

Program: Office and Headquarters

# Three walls



As the “Three Walls” concept developed, individual walls gained new expression and function. Light penetrates the glass or glass blocks that connect the three walls of this studio, further accentuating the independence of each wall. Although the plan of every floor is nearly identical, variance in furniture and ceiling height generate different and distinctive spatial atmospheres.