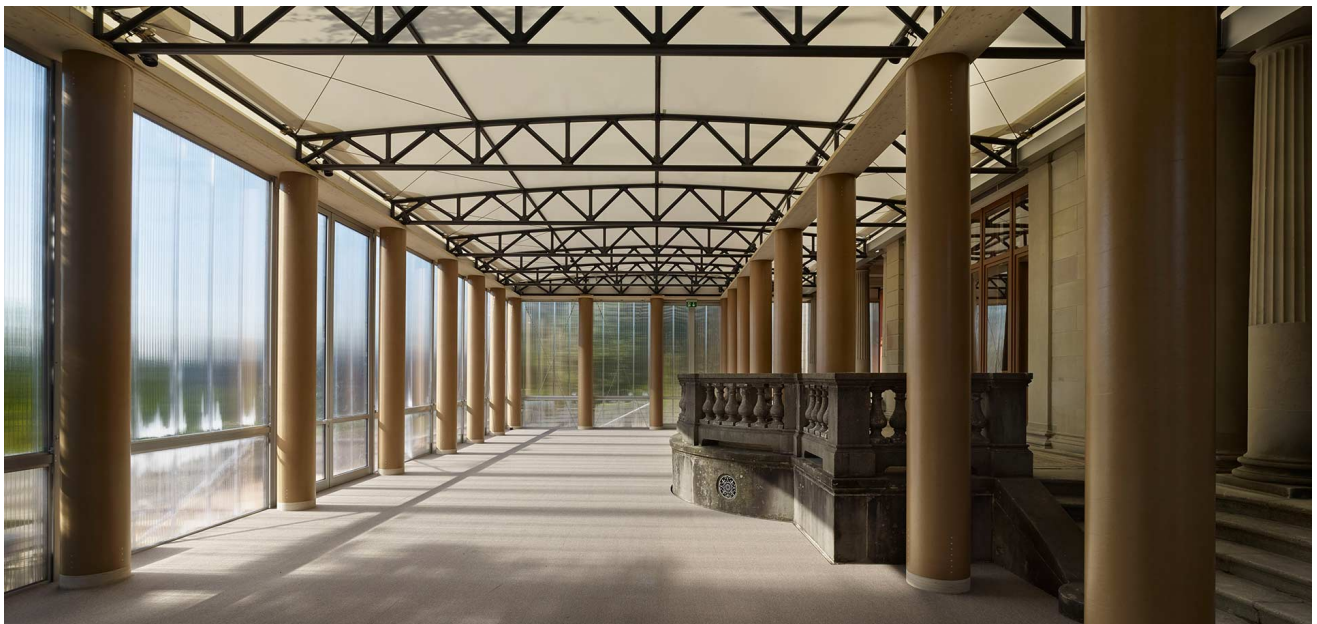


Year: 2013

Location: Switzerland

Program: Museum / Gallery

# Rietberg Museum Summer Pavilion



The pavilion is used during the summer months for 3 months then put in storage for the remaining time so two different diameter of paper tubes were used so they can store within each other and minimize necessary storage space. In order to assemble without the use of heavy machinery, polycarbonate exterior panels, carbon-fiber trusses and tent roof was used.