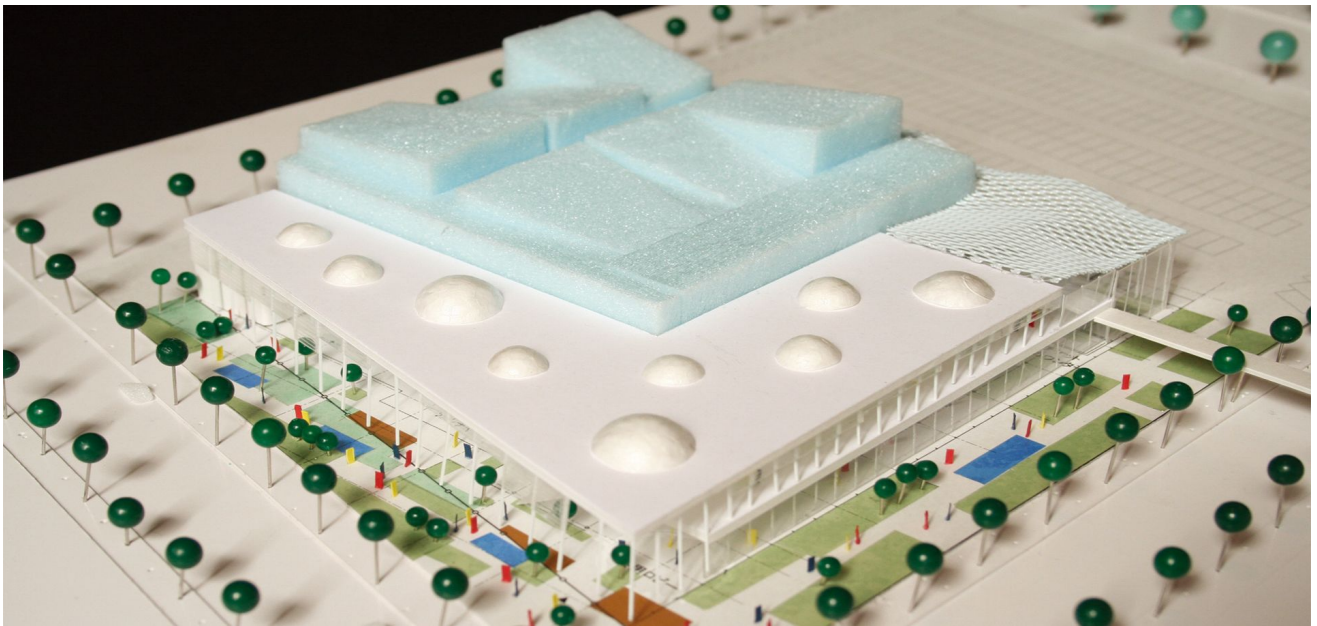


Year: 2005
Location: Japan
Program: Theater / Auditorium

Cinema Complex Nagaoka



The design of this commercial building, primarily a cinema complex, unifies diverse leisure facilities into one establishment. By making the movie theaters the structural core of the building, the space on the periphery is able to remain light and open with operable glass shutter facades. This peripheral buffer zone imitates traditional Japanese architecture by creating an inviting, intermediate public space.