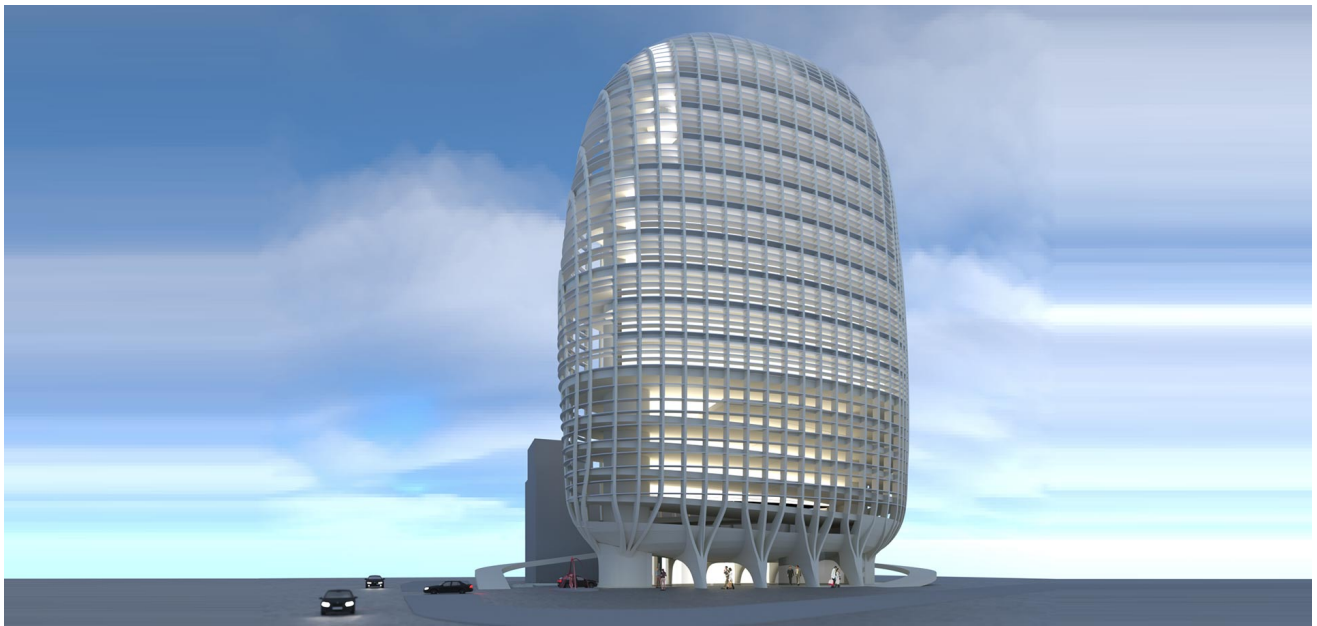


Year: 2010
Location: Indonesia
Program: Office and Headquarters

Apol Office Building



Situated in a prime location of Jakarta, this high-rise office building will serve as the headquarters for a major shipping company of Indonesia. In order to achieve a column-free office space, the central core and perimeter façade system, including the sun shading device, is constructed entirely of precast concrete panels woven into one complete structural system. Between the façade mullions, the horizontal sunshade louvers made of fiber reinforced concrete act as reinforcing members to reduce buckling. This allows the main structural members to be reduced in size, increasing the visual transparency of the building.